



W S I P C

# annual report 2016-2017



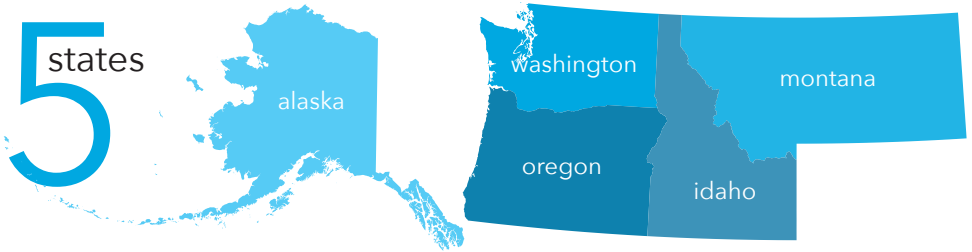
# [who we serve]



public/private  
districts served



students served by  
WSIPC/Skyward Software



# 88,500

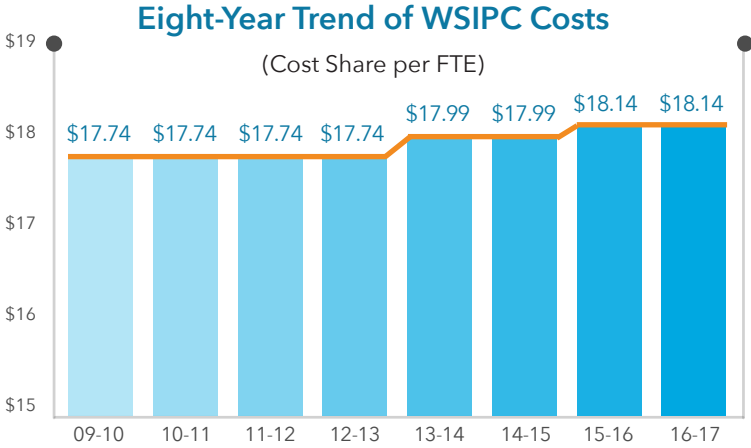
special education students with  
PCG partnership for IEP Online

# 10

new districts  
joined the  
Cooperative

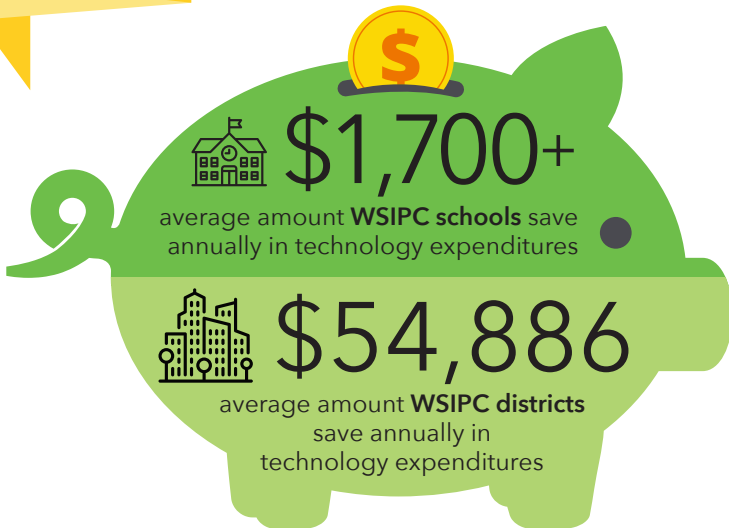
- Bishop Blanchet High School
- Great Northern School District
- iSucceed Virtual High School
- Joint School District No. 171
- Kiona-Benton School District
- Skamania School District
- Spokane International Academy
- Suquamish Tribal
- Walla Walla Catholic Schools
- Willow Public Charter School

WSIPC has been a conscientious steward of member resources, increasing costs at a modest cumulative rate of just 2.3% over the past 8 years, compared to the national Consumer Price Index, which rose 12.2% during the same period.



**40 cents**

amount the WSIPC fee has increased over the last 8 years

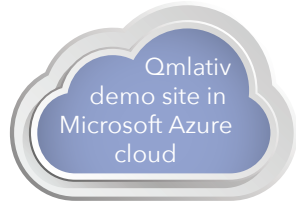


# [product highlights]



WSIPC negotiated a contract amendment with Skyward to provide cooperative districts with its newest software - the Qmlativ Education Management System.

WSIPC plans to begin the Qmlativ migration with Beta Districts during the 2017-18 school year and Early Adopters during the 2018-19 school year.



## My School Data™

CTE COMPLETERS



2  
new  
modules

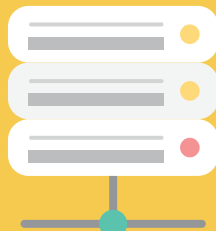
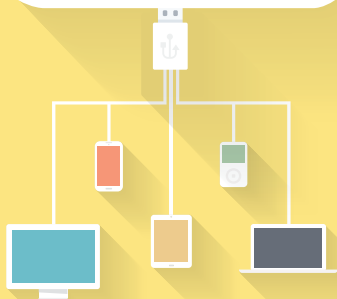
THOUGHTSPOT



## IT services

45 TB

amount of data storage  
schools receive



324

public/private schools WSIPC hosts  
and manages hardware for

## purchasing



request for  
proposals  
conducted

8

47

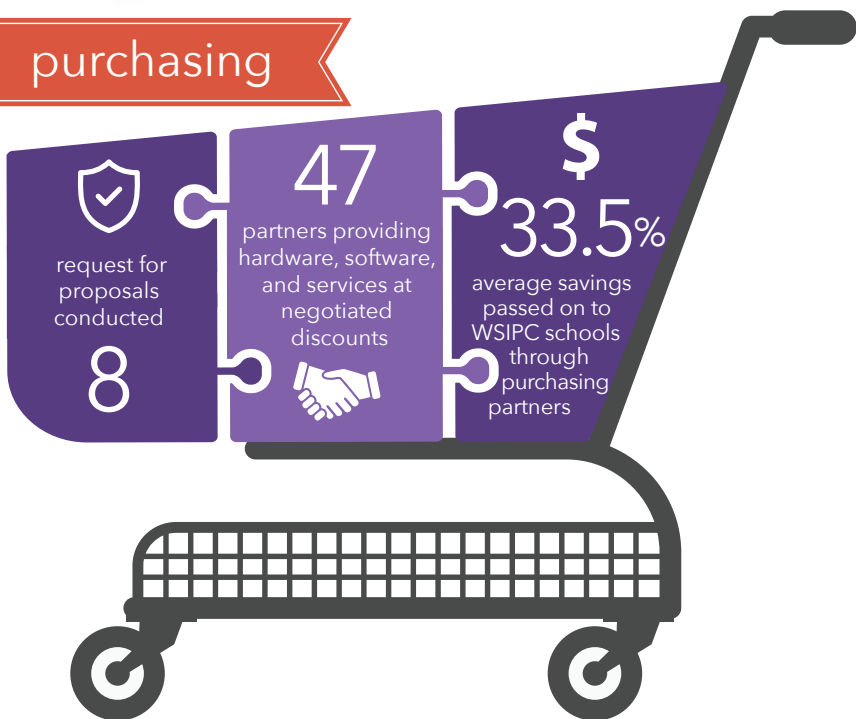
partners providing  
hardware, software,  
and services at  
negotiated  
discounts



\$

33.5%

average savings  
passed on to  
WSIPC schools  
through  
purchasing  
partners



# [training & support highlights]



## WASWUG fall



**93.2%**

satisfaction rating



437 attendees

## WASWUG spring



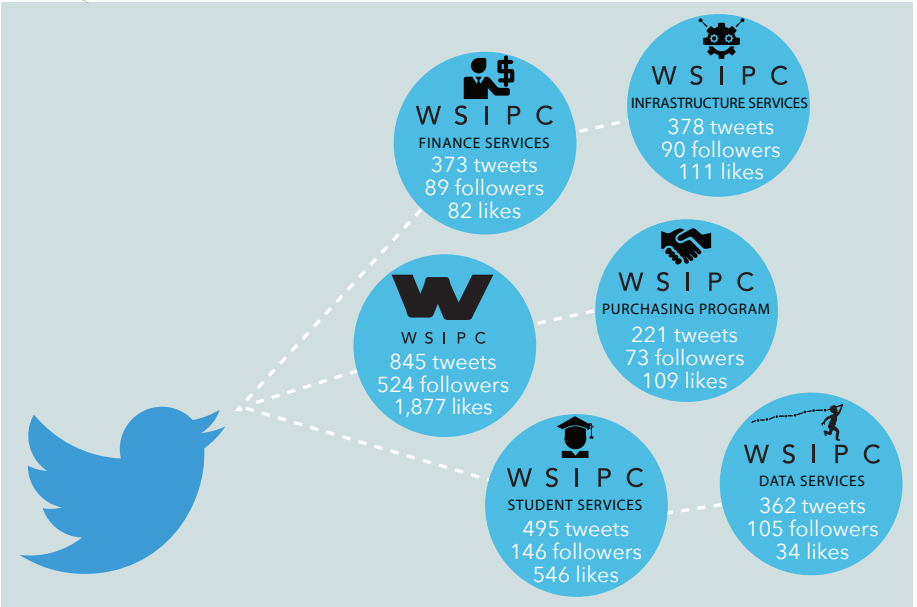
**94.5%**

satisfaction rating



1074 attendees

# [communication highlights]



## Inspired by education. Empowered by technology.

In 1967, ten school districts formed a Cooperative to share increasing costs for software development, hardware, and centralized technological support. The result of this collaboration became WSIPC, a unique public agency that provides information services for a reasonable cost to school districts.

The power of the cooperative is even more crucial today. WSIPC empowers districts with a complete School Management System (SMS), along with a powerful lineup of technology solutions, data management tools, IT services, expert training and support, purchasing services, and more.



### purpose

An unparalleled commitment to building K-12 capacity for sustained student success utilizing data and technology.

### mission

Provide a comprehensive, relevant and fiscally responsible suite of technology services so our partners may focus on their educational mission.

### vision

Fixed in our purpose to be the exception in service.

### governance

WSIPC is governed by a Board of Directors, including the Executive Director and CEO, who serves as a member. The Board of Directors advises WSIPC on programs and initiatives, and plays an intricate role in guiding the development of WSIPC's future goals.

For all of us at WSIPC, everyday is a new opportunity to renew the commitment that inspires us: putting our members at the center of everything we do.  
~ Marty Daybell  
Executive Director & CEO



W S I P C

*Inspired by education.  
Empowered by technology.™*

## Learn more and stay connected!

Visit [wsipc.org](http://wsipc.org), download the WSIPC App and follow us on social media.

