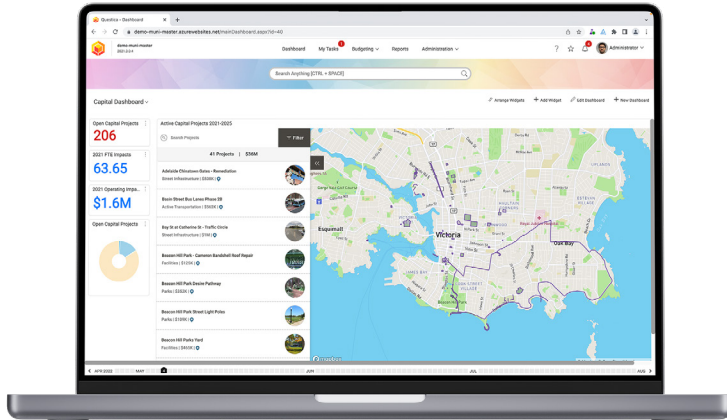


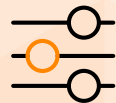
# Capital Budget Module



Questica Budget's Capital module is a centralized platform to simplify the process of Capital budget planning with a user-interface that is consistent with the Operating and Personnel modules.

The Operating and Capital modules are directly integrated, enabling operating impacts from capital budgets to be transferred to the correct budgets within the Operating module.

## PRODUCT FEATURES



- ◆ Engineer multi-year Capital projects
- ◆ Identify project expenditures, funding sources, and make adjustments
- ◆ Import prior years' actual and budget values at the onset
- ◆ Schedule import of ongoing actual costs from the ERP system or perform imports on-demand (e.g., Schedule 'nightly' imports to facilitate up-to-date budget to actual variance analysis)
- ◆ Export the approved Capital budget to the ERP or other system of record
- ◆ Administer project ranking according to user-defined criteria
- ◆ Create multiple scenarios for each project
- ◆ Set and track project milestones

## USER BENEFITS



- ◆ Construct capital projects on an annual, quarterly or monthly basis
- ◆ Enter narrations or explanations, and attach files (e.g., quotes, drawings, spreadsheets, or maps)
- ◆ Leverage maps/geographic data from a GIS database
- ◆ Categorize projects based on criteria such as Tangible Capital Assets, Fund(s), or Project Status
- ◆ Escalate requests through a configurable workflow system
- ◆ Submit post approval amendments that are subject to a configurable workflow
- ◆ Export the amendments to the ERP system as an option



# OpenBook Transparency and Visualization

The Capital Budget module within Questica Budget now seamlessly connects to **OpenBook**, our web-based transparency solution bringing the ability for organizations to display capital projects on an interactive map. Questica customers often couple the Capital module with Questica's OpenBook data visualization tool (an optional separate but integrated product offering) for even more added value.

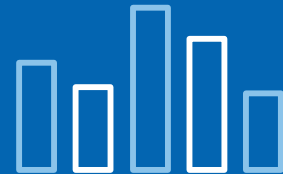
Interfaces are tested by real individuals facing disabilities, to create a fully ADA compliant, third-party verified user experience. We accommodate WCAG 2.1 Level AA parameters.



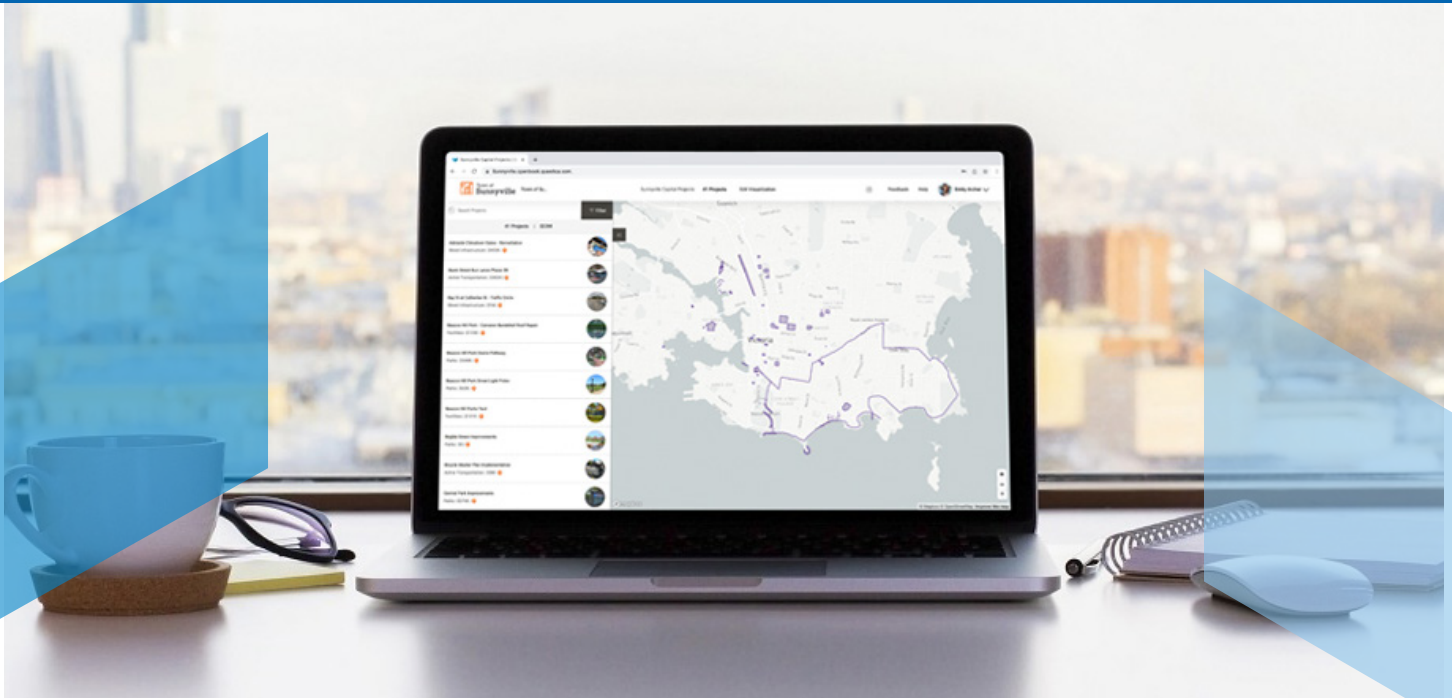
Map and display all infrastructure projects for public transparency



Standard GIS mapping supports proper map geometry with shape files



An array of interactive data visuals including descriptive text



Learn more at [questica.com/openbook](https://questica.com/openbook) or schedule a demo with us today!